

北京京叶顺畅汽车配件有限公司
Beijing Jingye Fluent Auto Parts Co., Ltd.



专注品质 | 质量第一 | 共赢未来
FOCUS ON QUALITY | QUALITY COMES FIRST | WIN-WIN FUTURE



北京京叶顺畅汽车配件有限公司
Beijing Jingye Fluent Auto Parts Co., Ltd.

**BUSINESS
BROCHURE**

DIRECTORY

目录

- ▶ **企业介绍**
Company Introduction
- ▶ **组织架构**
Organization Structure
- ▶ **企业文化与价值观**
Corporate Culture and Values
- ▶ **团队建设**
Team Building
- ▶ **荣誉与成就**
Honors and Achievements
- ▶ **产品介绍**
Product Introduction
- ▶ **联系我们**
Contact Us

COMPANY INTRODUCTION

企业介绍

▶ 企业发展历程:

Enterprise Development History:

北京京叶顺畅汽车配件有限公司成立于1993年，历经三十余载的砥砺前行与蓬勃发展，如今已傲然屹立为华北地区规模宏大的汽车零部件批发商之一。

Beijing Jingye Fluent Auto Parts Co., Ltd. was founded in 1993. After more than 30 years of development, it has become a large auto parts wholesaler in North China.

▶ 地理位置:

Geographical Location :

公司坐落于河北省沧州市河间市米各庄汽配之乡，此地亦是华北最大商用车批发市场，交通便捷，物流畅达，为公司的高效运营提供了得天独厚的地理优势。同时，公司积极拓展业务版图，在北京、天津、石家庄、保定、唐山等区域设立汽配销售公司，以全方位的服务网络覆盖华北大地。

The company is located in Migangzhuang, Hejian City, Cangzhou, Hebei Province, the hometown of auto parts, which is also the largest commercial vehicle wholesale market in North China. It has convenient transportation and smooth logistics, providing unique geographical advantages for the company's efficient operation. At the same time, the company actively expands its business territory and has established auto parts sales companies in Beijing, Tianjin, Shijiazhuang, Baoding, Tangshan and other regions, covering North China with a comprehensive service network.

▶ 主营业务:

Main Business:

福田、江淮品牌的全车配件	江淮京津区域配件总经销
福田轻卡京津冀配件经销商	福田康明斯配件京津冀专卖店
福田卡友配京津冀区域配件代理库	

Full vehicle parts of Foton and JAC brands

Total distributor of JAC parts in Beijing - Tianjin region

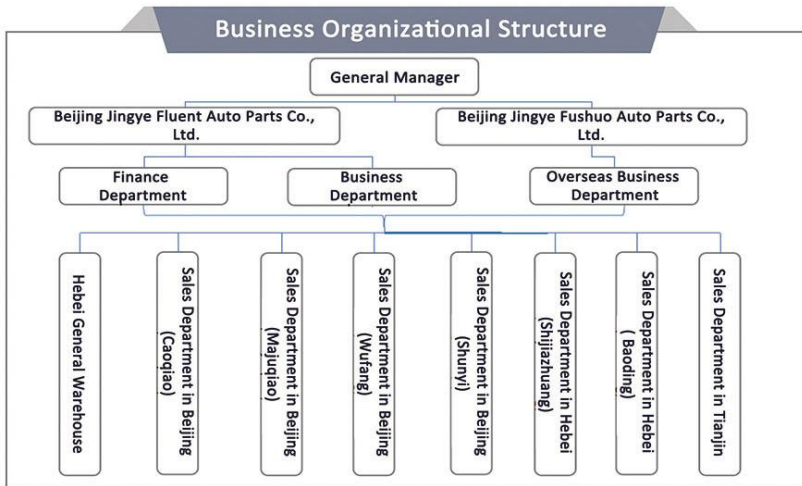
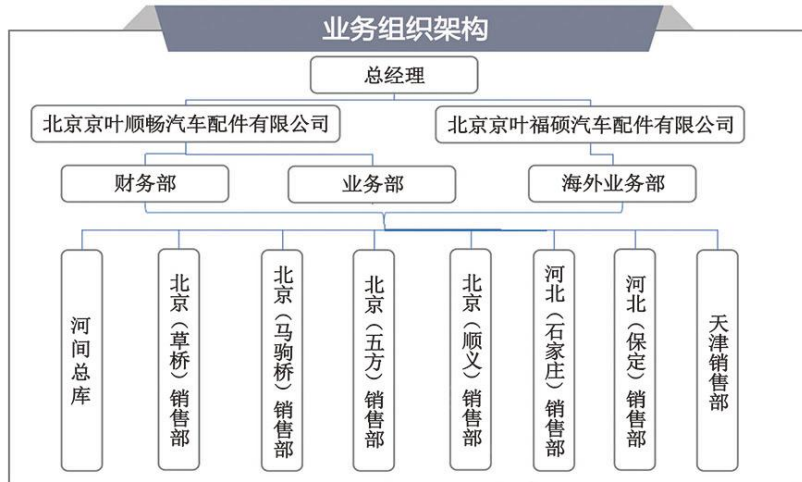
Dealer of Foton light truck parts in Beijing - Tianjin - Hebei region

Specialty store of Foton Cummins parts in Beijing - Tianjin - Hebei region

Agent warehouse of Foton Kaoyoupei parts in Beijing - Tianjin - Hebei region

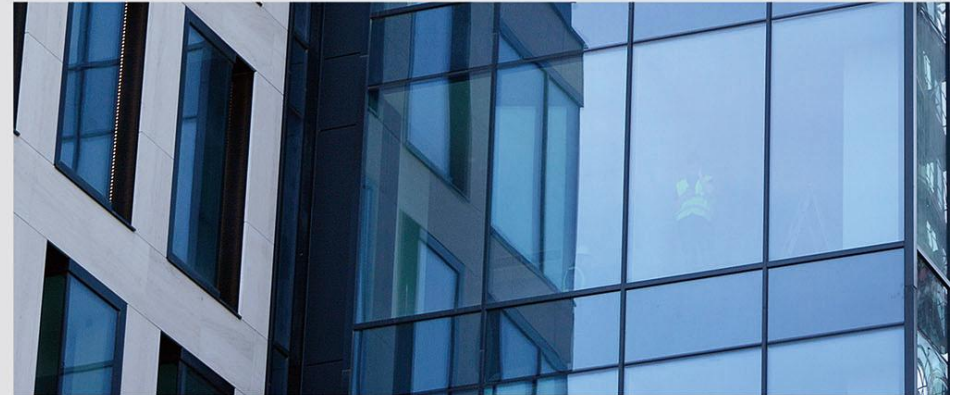
组织架构

ORGANIZATIONAL STRUCTURE



企业文化和价值观

TECORPORATE CULTURE AND VALUES AM



企业文化： 我们的企业文化以诚信、创新、合作、共赢为核心。我们始终坚持以人为本的管理理念，注重员工的成长与发展。我们的企业文化是公司发展的重要基石。

Corporate Culture: Our corporate culture takes integrity, innovation, cooperation and win-win as the core. We always adhere to the people-oriented management concept and focus on the growth and development of employees. Our corporate culture is an important foundation for the company's development.

价值观： 我们的价值观是为客户提供优质的产品与服务，为客户创造价值。我们始终坚持以客户为中心，以质量求生存，以创新求发展，实现企业持续、优质的成长。

Values: Our values are to provide customers with high-quality products and services and create value for them. We always adhere to the customer-centered concept, strive for survival by quality and seek development by innovation, achieving continuous and high-quality growth of the enterprise.

我们的团队

TEAM

成功之路

喜悦之路

正是因为有你们在鉴证... ..

The Road to Success

The Road to Joy

It is precisely because of your witnessing...

公司拥有一支专业且充满活力的团队，现有员工 100 余人。团队由一批经验丰富、技术精湛的零配件技术专家组成。他们分别来自汽车配件行业、机械制造行业等领域，具备丰富的行业经验和专业知识。我们的团队致力于为客户提供最优质的产品和服务。

The company has a professional and energetic team with more than 100 employees currently. The team consists of a group of experienced and highly skilled auto parts technical experts. They come from fields such as the auto parts industry and the mechanical manufacturing industry respectively, possessing rich industry experience and professional knowledge. Our team is committed to providing the best quality.

荣誉与成就

HONORS AND ACHIEVEMENTS

授权证书

AUTHORIZATION CERTIFICATE



获奖证书

AWARD CERTIFICATE



产品介绍
PRODUCT INTRODUCTION

欧马可 AUMARK



产品介绍
PRODUCT INTRODUCTION

奥铃 OLLIN



序号 Number	分类 Classification	图号 Part number	名称 Accessory name	英文名称 English name
1	保养类 maintenance category	5399594	机油滤芯	Oil filter
2		5262311	柴油滤芯	Diesel Filter
3		5346605	燃油滤清器	Fuel filter
4		L1125150200A0	滤芯	Filter element
5		L1119002010A0	空滤器总成	Air filter assembly
6		L1119019010A0	空滤器滤芯	Air filter core
7		L1110210701A0	柴油滤清器	Diesel filter
8		L0110210053A0	柴油滤清器	Diesel filter
9		110533501159	上下摩擦片	Upper and lower friction plates
10		L0373040077A0	危险报警开关	Hazard alarm switch
11	1016937300077	刹车灯开关	Brake Lamp Switch	
12	L1373010001A0	组合开关	Combination switch	
13	L1373020001A0	点火开关总成	Ignition switch assembly	
14	L0373040094A0	巡航开关总成	Cruise on/off assembly	
15	L0373040095A0	巡航+/-开关	Cruise+/- switch	
16	L1382010002A0	车身控制器	Vehicle body controller	
17	H4381020001A0	里程传感器	Speedometer Sensor	
18	L1811030002A0	空调控制器	Air conditioning controller	
19	L1812030001A0	压缩机	compressor	
20	易损类 Wear - prone category	L0361010014A0	蓄电池	storage battery
21		1B18037300030	门灯开关总成	Door light switch assembly
22		L179300000027	多态开关	Multi state switch
23		L1791010302A0	MP3总成	MP3 assembly
24		L1791030000A0	拉杆天线	Rod antenna
25		V1791020002A0	后扬声器总成	Rear speaker assembly
26		L0381070005A0	气压传感器	Air pressure sensor
27		L1381030001A0	燃油传感器	Fuel sensor
28		L1378060000A0	点烟器总成	Cigarette lighter
29		L0367010003A0	低音喇叭	bass horn
30	L1831010207A0	保险杠总成	Bumper assembly	
31	L1371010101A0	左前组合灯总成	Left front combination lamp assembly	
32	L1371010201A0	右前组合灯总成	Right front combination lamp assembly	
33	L1364020100A0	左前雾灯总成	Left front fog lamp assembly	
34	L1364020200A0	右前雾灯总成	Right front fog lamp assembly	
35	L1843020300A0	左后挡泥板	Left rear mudguard	
36	L1843020400A0	右后挡泥板	Right rear mudguard	
37	L1821010104A0	左后视镜总成	Left rearview mirror assembly	
38	L1821010204A0	右后视镜总成	Right rearview mirror assembly	
39	L1535010102A0	仪表盘总成	Instrument Panel Assembly	
40	事故类 Accident category	L1610200304A0	左前车门焊接总成	Left front door welding assembly
41		L1610200404A0	右前车门焊接总成	Right front door welding assembly
42		L1500311200A0	前围加强板	Front wall reinforced plate
43		L0371050102A0	左前示廓灯	Outline marker light (FR, LH)
44		L1371040302A0	左侧转向灯	Steering lamp(LH)
45		L1371040402A0	右侧转向灯	Right steering lamp assy
46		L0372010102A0	左后组合灯	Left rear combination lamp
47		L0372010202A0	右后组合灯	Right rear combination lamp
48		L0372040102A0	牌照灯总成	License Plate Lamp Assy
49		L1359090202A0	制动总阀总成	Brake valve assy
50	L1356302010A0	储气筒总成	Air storage cylinder assembly	
51	L0356012003A0	ABS电磁阀	ABS solenoid valve	
52	L0356015140A0	空压机钢管	Air compressor steel pipe	
53	L1340040101A0	转向油罐	Steering tank assembly	
54	L1340030801A0	转向油泵	Steering oil pump	
55	L1342030100A0	转向管柱	Steering column	
56	L1811010101A0	空调箱总成	Air conditioning box assembly	
57	L1376010001A0	组合仪表	Combination instrument	
58	L1812060001A0	压-冷管路	Pressure cooling pipeline	
59	L1812020000A0	冷凝器总成	Condenser assembly	
60	L1811011100A0	膨胀阀	Expansion valve	
61	L1811010900A0	蒸发器温度传感器	Evaporator temperature sensor	
62	L0367010002A0	高音喇叭	High pitched speaker	
63	L1811050002A0	暖风水管	Heating air pipe	
64	L1811011000A0	蒸发器芯体	Evaporator core body	
65	L1362010601A0	尾灯线束	Tail wire harness	
66	L1119012091A0	发动机进气胶管	Manguera de alimentacion de aire de motor	
67				

序号 Number	分类 Classification	图号 Part number	名称 Accessory name	英文名称 English name
1	保养类 maintenance category	5399594	机油滤芯	oil filter
2		5262311	柴油滤芯	Diesel Filter
3		L1119019010A0	空滤器滤芯	Air filter element
4		L1119002010A1	空滤器总成	Air filter assembly
5		L0110210053A0	柴油滤清器滤芯	Diesel filter cartridges
6		L0110210054A0	柴油滤清器滤座	Filter base of diesel filter
7		L0356012003A0	电磁阀	solenoid valve
8		B85X105X12	油封	oil seal
9		L1110210701A0	柴油滤清器总成	Fuel filter assembly
10		L0162050104A0	离合助力器总成	Clutch booster assembly
11	L11720000024	换挡软轴总成	Shift soft shaft assembly	
12	L13720000037	换挡软轴总成	Shift cable assembly	
13	L1403109091A0	前防撞杠总成	Front bumper assembly	
14	L0161030104A0	从动盘总成	Driven plate assembly	
15	L0161020103A0	离合器压盘	Clutch pressure plate	
16	L1172020104A0	软轴支架总成	Flexible shaft bracket assembly	
17	L0353070004A0	手制动阀总成	Hand brake valve assembly	
18	L1163070100A0	储油杯总成	Oil storage cup assembly	
19	L1173090101A0	变速操纵机构	Variable speed control mechanism	
20	易损类 Wear - prone category	L0315020018A0	备胎紧固器总成	Spare wheel tightener assembly
21		L1315130100A0	摇杆总成	Rocker assembly
22		L1173050101A0	变速操纵护罩	Gearshift operation cover assy
23		L1162030200B0	连接软管总成	Connecting hose assembly
24		L0356015140A0	空压缸钢管	Air compressor steel pipe
25		L1356020010A0	单向阀带接头	Check valve with connector
26		L1356302010A0	储气筒总成	Air storage cylinder assembly
27		L11620000003	前离合器泵油管	The oil pipe of the front - clutch slave cylinder
28		L1119012096A0	发动机进气管	Manguera de alimentacion de aire de motor
29		1105111900041	进气胶套总成	Air intake rubber bush assy
30	L1831010204A0	保险杠总成	Bumper assembly	
31	L1821010104A0	左后视镜总成	Left rearview mirror assembly	
32	L1821010204A0	右后视镜总成	Right rearview mirror assembly	
33	L1371010104A0	左前组合灯总成	Left - front combination lamp assembly	
34	L1371010204A0	右前组合灯总成	Right front combination lamp assembly	
35	L1364020100A0	左前雾灯总成	Left front fog lamp assembly	
36	L1364020200A0	右前雾灯总成	Right front fog lamp assembly	
37	L1500311301A0	前围加强板	Front wall reinforced plate	
38	事故类 Accident category	L1610200304A0	左前车门焊接总成	Left front door welding assembly
39		L1610200404A0	右前车门焊接总成	Right front door welding assembly
40		L1610110100A0	左前门上铰链总成	Left front door upper hinge assembly
41		L1610111000A0	右前门上铰链总成	Right front door upper hinge assembly
42		L1500069000A0	左侧角板安装支架	Left gusset mounting bracket
43		L150006901A0	左侧角板安装支架	Left gusset mounting bracket
44		L0372010102A0	左后组合灯	Left rear combination lamp
45		L0372010202A0	右后组合灯	Right rear combination lamp
46		M4365100300A0	牌照板	License plate
47		L1531014201A0	左角板本体	Left corner plate body
48	L1531014301A0	右角板本体	Right corner panel body	
49	L1117030100B0	电子油门踏板	Electronic accelerating pedal	
50	L1172020104A0	软轴支架总成	Flexible shaft bracket assembly	
51	L1300061125A0-29	转向节销	steering knuckle pivot	
52	L1119090914A0	空滤器支架	Air filter bracket	
53	L1342020100A1	转向盘总成	Steering wheel assembly	
54	L1342090300A0	转向管柱支架	Steering column bracket	
55	L1342070100A0	转向传动轴总成	Steering transmission shaft assembly	
56	L1300061125A0-51	制动鼓	Brake Drum	
57	L1354021300A0	制动踏板总成	Brake pedal assembly	
58	L1163180100A0	离合踏板总成	Clutch Pedal Assy.	
59	1106936800001	ABS ECU	ABS ECU	
60	L1340140105A0	转向器带臂	Steering gear with pitman arm	
61	L1340200103A0	转向器支架	Steering gear bracket	
62	1106930003304	轮毂螺栓组件	Wheel hub bolt component	
63	L1130080100B0	冷却模块总成	Cooling module assy	
64	L1130100300A0	钢圈及支架	Steel Rim and Bracket	
65	L1130210100A0	散热器出水软管	Radiator water outlet hose	
66	L1130220100A0	散热器进水管	Radiator inlet hose	
67				

产品介绍
PRODUCT INTRODUCTION
欧航 AUHAWK



产品介绍
PRODUCT INTRODUCTION
领航 FORLAND



序号 Number	分类 Classification	图号 Part number	名称 Accessory name	英文名称 English name
1	保养类 maintenance category	5262311	柴油滤芯	Diesel Filter
2		5399594	机油滤芯	oil filter
3		QT400X180Z6-3502572	摩擦片	Friction plate
4		801000-1105100	柴油滤清器	Diesel filter
5		801000-1105001	柴油滤清器座	Diesel filter seat
6		M411000000171	油水分离器	Oil-water separator
7		M411900000510	空滤器滤芯	Air filter core
8		QT400X180Z6-3502570	蹄铁带摩擦片	Brake Shoe with Friction Lining
9		SH3501105-N003	前制动摩擦片	Front brake friction plate
10		M4793010000A0	危险报警开关	Hazard alarm switch
11		M438200000014	车身控制器	Vehicle body controller
12		M4793015500A0	应急报警开关	Emergency alarm switch
13		H4375010002A0	24V小继电器	24V small relay
14	M411900000328	中冷器进气管	Intercooler inlet pipe	
15	M412000000521	前排气管	Front exhaust pipe	
16	M412000000522	中排气管	Middle exhaust pipe	
17	M479300000124	大灯调节开关	Headlight adjustment switch	
18	M479300000142	司机门控开关	Driver door control switch assy	
19	M479300000143	副司机门控开关	Co - driver Door Control Switch	
20	M479300000145	手动再生开关	Manual regeneration switch	
21	M411900000545	空滤器出气管	Air filter outlet pipe	
22	M4315020100A0	备胎吊挂	Spare tire hanging	
23	M4403112012A0	前拖车钩	Front trailer hook	
24	M4403300003A0	后下部防护	Rear lower part protective device	
25	M417200000271	换挡软轴	Gearshift flexible shaft	
26	M417200000272	选挡软轴	Gear selection flexible shaft	
27	M411900000497	高位进气管	High-mounted air intake pipe	
28	1B24937500005	通用继电器	Universal relay	
29	1B18037300030	门灯开关	Door lamp switch	
30	M483100000052	保险杠总成	Bumper assembly	
31	M4831010800A0	保险杠左脚踏	Left foot pedal on the bumper	
32	M4831010900A0	保险杠右脚踏	Right foot pedal on the bumper	
33	M483100000039	保险杠格栅	Bumper grille	
34	M483100000040	保险杠盖板	Bumper trim panel	
35	M484500000005	左下脚踏板本体	Lower left foot pedal body	
36	M484500000006	右下脚踏板本体	Lower right foot pedal body	
37	M453100000043	左角板本体	Left corner plate body	
38	M453100000044	右角板本体	Right corner plate body	
39	M453100000026	前翻转变板	Front flip cover plate	
40	M453100000045	前围左导风罩	Front left air guide cover	
41	M453100000046	前围右导风罩	Front right air guide cover	
42	M4531013600A0	前围左扶手	Left Armrest on the Front Panel	
43	M4531013700A0	前围右扶手	Right Armrest on the Front Panel	
44	M4364010101A0	左前组合灯	F.L. combined lamp	
45	M4364010201A0	右前组合灯	F.R. combined lamp	
46	M4364020100A0	左前雾灯	Left front fog lamp	
47	M4364020200A0	右前雾灯	Right front fog lamp	
48	1325836500001	左组合后灯	Left combination rear light	
49	1325836500002	右组合后灯	Right combination rear light	
50	M435500000001	储气筒总成	Air storage cylinder assembly	
51	M435500000117	复合储气筒	Compound air reservoir	
52	M411700000079	变速操纵机构	Transmission Control Mechanism	
53	M411700000003	电子油门踏板	Electronic accelerating pedal	
54	L035500000105	干燥器总成	Drier assembly	
55	M4342030100A0	转向管柱带传动轴	Steering column with transmission shaft	
56	G081200000285	压缩机	compressor	
57	M4315110100A0	备胎托架	Spare wheel carrier	
58	SH3519010-N102	前左制动室	Front - Left Brake Chamber	
59	QT385DH1-2403000	差速器总成	Differential assembly	
60	SH3551015-R102	右自动调整臂	Right automatic adjusting arm	
61	SH3551010-R102	左自动调整臂	Left self-adjusting arm	
62	M434000000107	转向直拉杆	Steering tie rod	
63	M4340040501A0	塑料油罐	Plastic Oil Tank	
64	M4340170105A0	转向器	Steering gear	
65	M4340180106A0	转向摇臂	Steering rocker arm	
66	M434200000069	方向盘	steering wheel	
67	M434200000024	转向传动轴	Steering Propeller Shaft	
68	M435000000054	排气制动蝶阀	Exhaust brake butterfly valve	
69				

序号 Number	分类 Classification	图号 Part number	名称 Accessory name	英文名称 English name
1	保养类 maintenance category	465Q-1017950	机油滤清器	Oil filter
2		L0110220101A0	汽油滤清器	Gasoline Filter
3		468QL-3707950	火花塞总成	Spark Plug Assy.
4		S111900000104	谐振腔总成	Resonant cavity assembly
5		S111900000063	空滤器滤芯	Air filter core
6		S111900000016	空滤器总成	Air filter assembly
7		1028E2A-3502030	后轮毂内油封	Rear nave inside oil seal
8		513-1003031	火花塞护套	Spark plug sheath
9		S113000000042	膨胀罐总成	Expansion tank assy
10		S1117200000003	换挡软轴总成	Shift soft shaft assembly
11		S117200000004	选档软轴总成	Shift soft shaft assembly
12		S135300000011	真空罐总成	Vacuum tank assy
13		L017300000016	手柄球总成	Handle ball assembly
14	L0162040126A0	离合器分泵总成	Clutch cylinder assembly	
15	S116300000009	离合器缸总成	Clutch Master Cylinder Assy.	
16	S111700000001	电子油门踏板总成	Electronic accelerator pedal assembly	
17	S135300000022	真空软管带单向阀	Vacuum Hose with One - way Valve	
18	S135300000001	驻车制动操纵手柄	Parking Brake operation handle	
19	S135500000066	制动总泵总成	Brake Master Cylinder Assy.	
20	S135600000145	前制动软管总成	Front brake hose assembly	
21	L012500000103	压差传感器	Pressure difference sensor	
22	S112500000002	颗粒捕集器总成	Particulate trap assembly	
23	L010000000138	水温传感器	Water temperature sensor	
24	L0110000001632	燃油箱总成	Fuel tank assembly	
25	L0110000001447	碳罐总成	carbon tank assy	
26	L011000000652	燃油箱压力传感器	fuel tank pressure Sensor	
27	L022000000435	传动轴螺栓	Drive shaft bolt	
28	S122000000009	中后传动轴总成	After drive shaft assembly	
29	S183100000001	保险杠总成	Bumper assembly	
30	S153100000001	前格栅总成	Front grille assembly	
31	S182700000001	后部防护板	rear fender	
32	S152100000002	后风窗玻璃总成	Rear windshield assembly	
33	S182100000001	左后视镜总成	Left rearview mirror assembly	
34	S182100000002	右后视镜总成	Right rearview mirror assembly	
35	S152100000006	前风窗玻璃总成	Front windshield assembly	
36	S153200000001	后围内饰板	Rear wall inner trim panel	
37	S154100000001	左前轮轮眉	Left-front Wheel Arch	
38	S154100000002	右前轮轮眉	Right-front Wheel Arch	
39	S153500000001	仪表盘总成	Instrument Panel Assembly	
40	S153500000002	副仪表盘总成	Auxiliary instrument panel assembly	
41	S150000000772	左翼子板组件	Left fender assembly	
42	S150000000773	右翼子板组件	Right fender assembly	
43	S161000000090	左前车门调整总成	Left front door adjustment assembly	
44	S161000000091	右前车门调整总成	Right front door adjustment assembly	
45	S182300000002	室内灯总成	Indoor light assembly	
46	S137100000001	左前组合灯总成	Left front combination lamp assembly	
47	S137100000002	右前组合灯总成	Right front combination lamp assembly	
48	S112000000001	消声器总成	Muffler assembly	
49	515K-1013800-01	机油冷却器	Oil cooler	
50	513R-1306950-01	节温器总成	Assembly Thermostat Hsg	
51	515KL-1601800	离合器从动盘	Clutch driven disc	
52	515KL-1601900	离合器压盘	Clutch pressure plate	
53	515KL-1005300-01	飞轮及齿圈	Flywheel & Geared Ring Assy	
54	515K-1207950-01	EGR阀总成	EGR valve assembly	
55	S118200000003	离合器分泵油管总成	Oil pipe assy of clutch cylinder	
56	S135300000006	制动离合器踏板总成	Brake clutch pedal assembly	
57	S135500000065	真空助力器总成	Vacuum Booster Assy.	
58	S116300000002Y2	制动总泵总成	Brake Master Cylinder Assy.	
59	S134000000020	转向高低压管	Steering High - Pressure and Low - Pressure Pipes	
60	S134000000024	转向器带摇臂总成	Steering gear with rocker arm assy	
61	S111900000183	高位进气管总成	High position intake pipe assembly	
62	S111900000085	空滤器支架	Air filter bracket	
63	L010000001145	ECU总成	ECU Assy	
64	L0100080129A0	后氧传感器总成	Rear Oxygen Sensor Assy.	
65	515K-1014950	PCV阀总成	PCV Valve Assy	
66				

产品介绍
PRODUCT INTRODUCTION

骏铃 JUNLING



产品介绍
PRODUCT INTRODUCTION

恺达 KAIDA



序号 Number	分类 Classification	图号 Part number	名称 Accessory name	英文名称 English name
1		1109170LE010	空滤	Air filter
2	保养类 maintenance category	1105104E5233	燃油滤清器滤芯	Fuel filter element
3		1105204E5233	柴油滤芯	Diesel Filter
4		XZ51313	机油滤芯	oil filter
5		1101010E5020	燃油箱总成	Fuel tank assembly
6	1105010LE030	油水分离器	Oil-Water Separation Pump	
7	3704930LD010	油箱锁总成	Fuel Tank Lock Assembly	
8	1108010E5020	电子油门踏板总成	Electronic accelerator pedal assembly	
9	1109100LE010	空气滤清器总成	Air filter Assy.	
10	1203010E5020	前排气总管	Front Exhaust Pipe Assembly	
11	1311010G15D0	膨胀水壶	Expansion Tank	
12	1301011E5020	散热器总成	Radiator Assembly	
13	1109020E5020	中冷器总成	Intercooler assembly	
14	1600100E5020	离合器压盘总成	Clutch Pressure Plate Assembly	
15	1600200E5020	离合器从动盘总成	Clutch Disc Assembly	
16	1602010E5020	离合器踏板支架总成	Clutch Pedal Bracket Assembly	
17	1605010G5QZ	离合器总泵总成	Clutch Master Cylinder Assembly	
18	1607300LE170	离合器助力器总成	Clutch Booster Assembly	
19	2202100E5020	中间传动轴总成	Intermediate shaft assembly	
20	2201100E5020	后桥传动轴总成	Rear axle propeller shaft Assy.	
21	3101010E5020	轮毂总成	Rim Assembly	
22	3401000E22CH	转向器总成	Steering Gear Assembly	
23	3003600E5020	直拉杆总成	Straight rod assembly	
24	5206100E5020	前风挡玻璃	Front windshield	
25	2803101E5020	前保险杠本体	Front bumper body	
26	8401100E5020	格栅总成	Grille Assembly	
27	4121100E5020XZ	左前组合灯总成	Left front combination lamp assembly	
28	4121200E5020XZ	右前组合灯总成	Right front combination lamp assembly	
29	4116200E5020	右前雾灯总成	Right front fog lamp assembly	
30	4121300E5020	左前转向灯总成	Left Front Turn Signal Light Assembly	
31	4121400E5020	右前转向灯总成	Right Front Turn Signal Light Assembly	
32	4133100W5210	左后灯总成	Left Rear Lamp Assembly	
33	4133200W5210	右后灯总成	Right Rear Lamp Assembly	
34	4114100E5042	示廓灯	Position lamp	
35	5000016E6200	豫铃字标	Yu Ling logo	
36	3921011E5020	JAC字标	JAC logo	
37	5302100E5020	前围左侧板总成	Left side board Assy.front wall	
38	5302200E5020	前围右侧板总成	Right side board Assy.front wall	
39	5302300E5020	左大灯装饰板	Left headlight decorative plate	
40	5302400E5020	右大灯装饰板	Right headlight decorative plate	
41	8210100E5205	左外后视镜总成	Left exterior rearview mirror assembly	
42	8210200E5205	右外后视镜总成	Right exterior rearview mirror assembly	
43	1701010LE030	变速箱总成	Transmission Assy	
44	2400010E5020-4.3	后桥总成	Rear axle assembly	
45	3000000E5020-H001	前轴总成合件	Front Axle Assembly Components	
46	3501010E6274	前制动蹄总成(左)	Front brake Assy (LH)	
47	3501020E6274	前制动蹄总成(右)	Front brake Assy (RH)	
48	3551.32ZA70S-030	后左制动调整臂总成	Left adjusting arm	
49	3551.32ZA70S-040	后右制动调整臂总成	Adjusting arm assembly of right rear brake	
50	3519100E115.	后左气室总成	Rear left air chamber Assy	
51	3519200E115.	后右气室总成	Rear right air chamber Assy	
52	3501200B10JCQZXA	前调整臂总成(左)	Front adjusting arm assembly (left)	
53	3501205B10JCQZXA	前调整臂总成(右)	Front adjusting arm assembly (right)	
54	3503100LE130XZ	左前制动钳总成	Left front brake caliper Assy	
55	3503200LE130XZ	右前制动钳总成	Right front brake caliper Assy	
56	3502K88-105	摩擦片	Friction plate	
57	3501105LE130XZ	前刹车片	Front friction lining	
58	BP03100090-MCP	制动蹄	Brake shoe	
59

序号 Number	分类 Classification	图号 Part number	名称 Accessory name	英文名称 English name
1		1010320FD060	机油滤芯	oil filter
2		1010320FD080	机油滤芯	oil filter
3	保养类 maintenance category	1010301FA	机油滤芯	oil filter
4		X20136	机油滤芯	oil filter
5		1010301X1008A	机油滤芯	oil filter
6		1109160W6000	空滤	Air filter
7		1109140W5000	空滤	Air filter
8		1109130W300	空滤	Air filter
9		1017110GH200	机油滤芯	oil filter
10		S117200000003	换挡软轴总成	Shift soft shaft assembly
11		S117200000004	透挡软轴总成	Shift soft shaft assembly
12	S135300000011	真空罐总成	Vacuum tank Assy	
13	L017300000016	手柄球总成	Handle ball assembly	
14	L0182040126A0	离合器分泵总成	Clutch cylinder assembly	
15	S116300000009	离合总泵总成	Clutch Master Cylinder Assy.	
16	S111700000001	电子油门踏板总成	Electronic accelerator pedal assembly	
17	S135300000022	真空软管带单向阀	Vacuum Hose with Check Valve	
18	S135300000011	驻车制动操纵手柄	Parking brake operation handle	
19	S135500000066	制动总泵总成	Brake Master Cylinder Assy.	
20	S135600000145	前制动软管总成	Front brake hose assembly	
21	L012500001103	压差传感器	Pressure difference sensor	
22	S112500000002	颗粒捕集器总成	Particulate trap assembly	
23	L010000001138	水温传感器	Water temperature sensor	
24	L011000001632	燃油箱总成	Fuel tank assembly	
25	L011000001447	碳罐总成	carbon tank Assy	
26	L011000000652	燃油箱压力传感器	fuel tank pressure Sensor	
27	L022000000435	传动轴螺栓	Drive shaft bolt	
28	S122000000009	中后传动轴总成	After drive shaft assembly	
29	2803100W6000	前保险杠总成	Front Bumper Assembly	
30	8402010W6000	前盖总成	Front cover Assy	
31	S301100W6000	前围装饰条总成	Front Panel Garnish Strip Assembly	
32	S302100W5000	前围左侧板总成	Left side board Assy.front wall	
33	S302200W5000	前围右侧板总成	Right side board Assy.front wall	
34	8202100W6000	左外后视镜总成	Left - outer Rearview Mirror Assembly	
35	8202200W6000	右外后视镜总成	Right - outer Rearview Mirror Assembly	
36	4121100W5000	左组合前灯	Left Combined Front Lamp	
37	4121200W5000	右组合前灯	Right Combined Front Lamp	
38	3773910D817	后组合灯(左)	Rear Combined Lamp (Left)	
39	3773920D817	后组合灯(右)	Rear Combined Lamp (Right)	
40	5206100W6000	前风窗玻璃总成	Front windshield assembly	
41	6101100W5000	左车门壳体	Left Door Shell	
42	6101200W5000	右车门壳体	Right Door Shell	
43	6106100W5000	左前侧车门上铰链总成	Left-front Side Door Upper Hinge Assembly	
44	6106200W5000	右前侧车门上铰链总成	Right-front Side Door Upper Hinge Assembly	
45	6106300W5000	左前侧车门下铰链总成	Left-front Side Door Lower Hinge Assembly	
46	6106400W5000	右前侧车门下铰链总成	Right-front Side Door Lower Hinge Assembly	
47	5300010W6000	前围焊接总成	Front wall welding assembly	
48	1301010W6000	散热器总成	radiator Assy	
49	1201100W6000	消声器总成	Muffler Assembly	
50	1605010W5000	离合器总泵总成	MASTER CYLINDER ASSY - CLUTCH	
51	1609100W300	离合器分泵总成	Clutch Slave Cylinder Assembly	
52	1635010W5000	离合制动踏板本体总成	Clutch and Brake Pedal Body Assembly	
53	1701010W6130	变速箱总成	Gearbox assembly	
54	2201100W6000	后桥传动轴总成	Rear axle propeller shaft Assy.	
55	1703100W6000	变速换挡操纵总成	Transmission Shift Control Seat Assembly	
56	1703200W6000	透换挡软轴带橡胶垫总成	Shift and Selector Flexible Shaft with Rubber Pad Assembly	
57	240W6000-2402010A	主减速器总成	Final Drive Assy.	
58	SCBJ-WJ215W6130	离合器套装	Clutch Kit	
59	SCBJ-WJ220LJ4A15Q	离合器套装	Clutch Kit	
60	SCBJ-WJ188-469QE2	离合器套装	Clutch Kit	
61	2905010W300	前减震器总成	Front Shock Absorber Assembly	
62	2902010W6000	前钢板弹簧总成	Front steel plate spring assembly	
63	2905023W6000	前减震器下销	Front Shock Absorber Lower Pin	
64	2912010W300	后钢板弹簧总成	Rear leaf spring assembly	
65	2915010W300	后减震器总成	Rear shock absorber assembly	
66

产品介绍
PRODUCT INTRODUCTION

祥菱 XIANGLING



产品介绍
PRODUCT INTRODUCTION

康铃 KANGLING



序号 Number	分类 Classification	图号 Part number	名称 Accessory name	英文名称 English name
1	保养类 maintenance category	465Q-1017950	机油滤清器	Oil filter
2		468QL-3707950	火花塞总成	Spark Plug Assy.
3		L0119218014A0	主滤芯	Main filter element
4		L011900000830	空滤器总成	Air filter assembly
5		L011900000780	谐振腔总成	Resonant cavity assembly
6		DF1810A-2403153	半轴油封	Half axis oil seal
7		TM481A-3502020-1	制动蹄	Brake shoe
8		DF1810A-2403152	轮毂内油封	Hub inner sealing ring
9		B1121A-2402052	主齿油封总成	Driving Gear Oil Seal Assy.
10		L017205010EA0	换挡软轴总成	Shift soft shaft assembly
11		L017206010GA0	换挡软轴总成	Shift soft shaft assembly
12		L0173380201A0	限位块	stop block
13		L010000001138	水温传感器	Water temperature sensor
14		515K-1207950-01	EGR阀总成	EGR valve assembly
15		515K-1014950	PCV阀总成	PCV Valve Assy
16	L0354040139A0	离合踏板回位簧	Retracting spring of clutch pedal	
17	L016200000469	离合分泵油管总成	Oil pipe assy of clutch cylinder	
18	L0315020225A0	备胎升降器总成	Spare tyre lifter assy	
19	1104311700013	电子油门踏板总成	Electronic accelerator pedal assembly	
20	L0162040126A0	离合分泵总成	Clutch cylinder assembly	
21	L016300000009	离合总泵总成	Clutch Master Cylinder Assy.	
22	L035300000516Y1	真空助力器	Reforzador de vacio	
23	L035300000516Y2	制动总泵总成	Brake Master Cylinder Assy.	
24	FTTM481-2403144	半轴	Half axis	
25	L030000000363-52	前轮毂	Front wheel hub	
26	S130000000002	内摩擦块总成	Friction block assy(inside)	
27	1022EZC2A-300101	横拉杆杆身	Tie rod	
28	S130000000002	左外摩擦块总成	Left-outer friction block assy	
29	515-3701950	发电机总成	Generator assembly	
30	05S1100000070	前保险杠	Front bumper	
31	L0500310312A0	左翼子板	left fender	
32	L0500310313A0	右翼子板	The right sheet	
33	L0610110100A0	左前门铰链	Left - front Door Hinge	
34	L0610110600A0	右前门铰链	Right - front Door Hinge	
35	L0610200300A0	左前车门焊接	Left-front Door Welding	
36	L0610200400A0	右前车门焊接	Right-front Door Welding	
37	L0831020108A0	保险杠支架	Bumper bracket	
38	L0505050111A0	前标志	Front Emblem	
39	L0505060128A0	"祥菱"字样	"Xiangling" with the words	
40	L0507010160A0	导流罩总成	Deflection hood assembly	
41	L0521010100A0	前风窗玻璃	Front windshield glass	
42	L012000000355	排气吊挂	Exhaust suspension	
43	L085000007059	左指泥板总成	Left mudguard assembly	
44	L085000007060	右指泥板总成	Right mudguard assembly	
45	L082100000028	左后视镜	left mirror	
46	L082100000029	右后视镜	Right Rearview Mirror	
47	L0823020902A0	内后视镜	Inside Rearview Mirror	
48	L0572080912A0	顶棚	Canopy	
49	L0535010119A0	仪表板总成	Instrument Panel Assembly	
50	L012500000443	温度传感器	temperature sensor	
51	L012500001103	压强传感器	Pressure difference sensor	
52	L012500001715	颗粒捕集器总成	Particulate trap assembly	
53	B14885000008	骑马螺栓	Horseback bolt	
54	L034000000920	转向油罐带支架	Steering Oil Tank with Bracket	
55	L0357030115A0	驻车制动器	Parking brake	
56	L035300000517	真空罐总成	Vacuum tank assy	
57	L017300000057	变速操纵机构	Variable speed control mechanism	
58	L0173050148A0	变速操纵护罩	Gearshift operation cover assy	
59	L0173090123A0	变速操纵机构	Variable speed control mechanism	
60	L0354040130A0	离合踏板总成	Clutch Pedal Welding Assembly	
61	L0353020136A0	驻车制动操纵手柄	Parking brake operation handle	
62	L035300000516	真空助力器带制动总泵	vacuum booster system	
63	L034200000088	方向盘总成	Steering wheel assembly	
64	L034200000092	转向管柱带传动轴	Steering column with transmission shaft	
65	L034200000092	转向管柱支架	Steering column bracket	
66	L0340140147A0	转向器带摇臂	Steering gear with pitman arm	
67	L051200000088	转向护罩	Steering protective cover	
68	L085900000794	骑马螺栓压板	Horseback bolt pressing plate	
69	

序号 Number	分类 Classification	图号 Part number	名称 Accessory name	英文名称 English name
1	保养类 maintenance category	110913085051	空滤	Air filter
2		1105012B6544	滤芯	Filter element
3		JX1008A	机滤	CARTRIDGE LUB OIL
4		1105102B6544	滤芯	Filter element
5		YP-KL/DO73/800G	制动液	Brake fluid
6		6105010E800XL	左前侧车门门锁体总成	Left-front Side Door Lock Assembly
7		6105020E800XL	右前侧车门门锁体总成	Right-front Side Door Lock Assembly
8		6105050G11F0	左车门锁外把手总成	Left Door Lock Outer Handle Assembly
9		6105060G11F0	右车门锁外把手总成	Right Door Lock Outer Handle Assembly
10		6105030E7120	左车门内把手	Left door inner handle
11		6105040E7120	右车门内把手	Right door inner handle
12		6104110E800XZ	左玻璃升降器总成	Glass lifter assy(left)
13		6104210E800XZ	右玻璃升降器总成	Glass lifter assy(RH)
14		3921013E6A1	左车门把手装饰膜	Left Door Handle Decoration Film
15		3921023E6A1	右车门把手装饰膜	Right Door Handle Decoration Film
16	6102952E800	左车门下裙条	Left Door Lower Molding Strip	
17	6102953E800	右车门下裙条	Right Door Lower Molding Strip	
18	8405100B6010	左脚踏板总成	Left Foot Pedal Assy	
19	8405200B6010	右脚踏板总成	Right Foot Pedal Assy	
20	3746930D5050	电动车窗主开关	Main switch of power windows	
21	3746940D5050	电动车窗副开关	Sub-switch of power windows	
22	1108010D7110	电子油门踏板总成	Electronic Throttle Pedal Assembly	
23	1605010E0A4	离合助力器总成	Clutch Master Cylinder Assembly	
24	1607300B8CD7	离合助力器总成	Clutch Booster Assembly	
25	4121100D7110	左前组合灯总成	Left front combination lamp assembly	
26	4121200D7110	右前组合灯总成	Right front combination lamp assembly	
27	4116100D7110	左前雾灯总成	Left front fog lamp assembly	
28	4116200D7110	右前雾灯总成	Right front fog lamp assembly	
29	4133100W5202	左后组合灯总成	Left rear combination lamp assembly	
30	4133200W5202	右后组合灯总成	Right rear combination lamp assembly	
31	4111010E190	左侧转向灯总成	Left Side Turn Signal Light Assembly	
32	4111020E190	右侧转向灯总成	Right turn signal assembly	
33	2803101D7110A	前保险杠	Front bumper	
34	2803102D7110	前保险杠支架	Front bumper bracket	
35	8401100D7110	前雨刷总成	Front cover assy	
36	5300010D7110	前围焊接总成	Front wall welding assembly	
37	8210100D7110	左外后视镜总成	Left Outer Rearview Mirror Assembly	
38	8210200D7110	右外后视镜总成	Right Outer Rearview Mirror Assembly	
39	3904100E7120	AC字标	AC logo	
40	3921102E8Q63	康铃字标	Kangling Logo	
41	6100040E7120	右车门壳体	Right Door Shell	
42	6100030E7120	左车门壳体	Left Door Shell	
43	5206011D8	前风窗玻璃总成	Front windshield assembly	
44	1311010E8AUS	膨胀水箱带盖总成	Expansion Tank with Cap Assembly	
45	1301100D6640	散热器总成	radiator assy	
46	1602020E22C1	离合器踏板及支架本体总成	Clutch Pedal and Bracket Body Assembly	
47	1701010D8C1H	变速器总成	Transmission assy	
48	1703200D7110	换挡软轴总成	Gear selection flexible shaft assembly	
49	1703300B5011	换挡软轴总成	Shift Cable Assembly	
50	2200010D6352	传动轴总成	Drive Shaft Assembly	
51	2905010D332	前减震器总成	Front shock absorber assy	
52	2905010D2	减震器总成	Shock absorber assembly	
53	3003600B1170XZ	直拉杆总成	Straight Tie - Rod Assembly	
54	1660030005002	横拉杆总成	Tie rod assembly	
55	3000000E1161-10	前轴	Front Axle	
56	3000000E8AUS-51	前制动鼓	Front Brake Drum	
57	3000001E8BSS-52A	前轮毂	Front wheel hub	
58	30000101063FQ01A-15	左转向节带衬套总成	Steering knuckle with bush assy (LH)	
59	30000101063FQ01A-20	右转向节带衬套总成	Right steering knuckle with bush assy	
60	

产品介绍
PRODUCT INTRODUCTION
基础机 ENGINE BASE UNIT



联系我们
CONTACT US



康明斯ISF2.8系列 CUMMINS ISF2.8 SERIES



康明斯ISF2.8系列(国六)

CUMMINS ISF2.8 SERIES (CHINA VI EMISSION STANDARDS)



康明斯ISF3.8/4.5系列 CUMMINS ISF3.8/4.5 SERIES



欧康F2.0系列
AUCAN F2.0 SERIES



欧康F2.5系列
AUCAN F2.5 SERIES



国内业务 DOMESTIC BUSINESS

座机 (BUSINESS PHONE) : 0317-3600078

吴春江: 18510096012 彭 灿: 18510090652



公司名称: 北京京叶顺畅汽车配件有限公司

COMPANY NAME: BEIJING JINGYE FLUENT AUTO PARTS CO., LTD.

公司地址: 北京市丰台区草桥东路27号草桥汇丰汽车配件市场4厅16号

COMPANY ADDRESS: NO. 16, HALL 4, CAOQIAO HUIFENG AUTOMOBILE PARTS MARKET,
NO. 27, CAOQIAO EAST ROAD, FENGTAI DISTRICT, BEIJING.

国际业务 INTERNATIONAL BUSINESS

座机 (BUSINESS PHONE) : 86-010-51751158

邮箱地址 (E-MAIL) : INFO@BJJINGYE.CN

即时通信 (WHATSAPP) :



公司名称: 北京京叶福硕汽车配件有限公司

COMPANY NAME: BEIJING JINGYE FUSHUO AUTO PARTS CO., LTD.

公司地址: 北京市顺义区南法信地区办事处段南侧 (众合汽配市场2层17-1号)

COMPANY ADDRESS: SOUTH SIDE OF THE SECTION OF NANFAXIN SUB-DISTRICT OFFICE, SHUNYI
DISTRICT, BEIJING (NO. 17-1, 2ND FLOOR, ZHONGHE AUTO PARTS MARKET).